

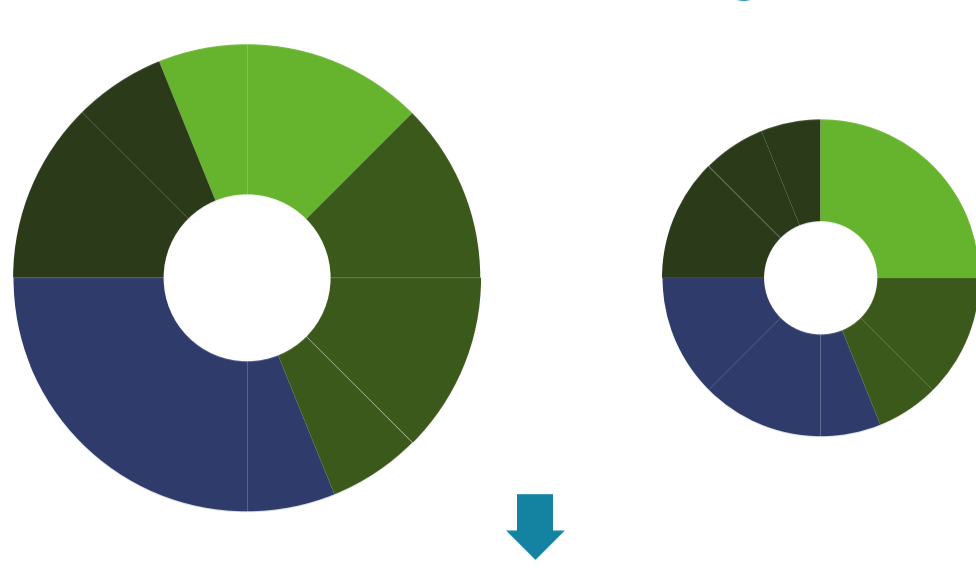
# HOW TO ALIGN FRANCE ON A 1,5°C? PATHWAY

What is the scope of measures which have to be implemented to stay aligned with a 1,5°C warming pathway?

## REDUCE NATIONAL EMISSIONS

To reach this target, national emissions need to be reduced

➔ by **63%** by **2030** ◀



### Scope of measures to be implemented:

#### HOUSING

- 1 000 000 homes renovated per year
- Electricity consumption per person **divided by 2** (excluding heating)
- Heating limited to 19°C for all
- New construction limited to collective housing with average surface area of 30m2 per person

#### TRANSPORTATION

- Vehicle population **divided by 2**
- Close flight paths where rail or road alternatives exist
- Generalise homeworking, carpooling, eco-driving & cycling
- 50% more trains
- Distance covered by bicycle per person is **multiplied by 6**

#### AGRICULTURE

- Consumption of meat & dairy products **divided by 3**
- 0 processed food & packaged
- 0 land development

#### GOODS & SERVICES

- Household appliance product life **multiplied by 4**
- Data consumption **divided by 3**
- 1kg of clothes per person a year
- No more advertising

## REDUCING OUR CARBON FOOTPRINT\*

\* Amount of CO2 emitted by an object, a company, or a person

Carbon footprint of French must

➔ be divided by **2,7** ◀

2018 10 tCO2e/hab 2030 3,7 tCO2e/hab



### A RADICAL CHANGE IN OUR WAY OF LIFE, OUR COMPANIES, OUR LANDS

- > 1 000 000 jobs in 5 years
- The country's biggest training program
- 1/3 of the population would change jobs
- 5R : Refuse, Reduce, Reuse, Repair & Recycle instead of producing

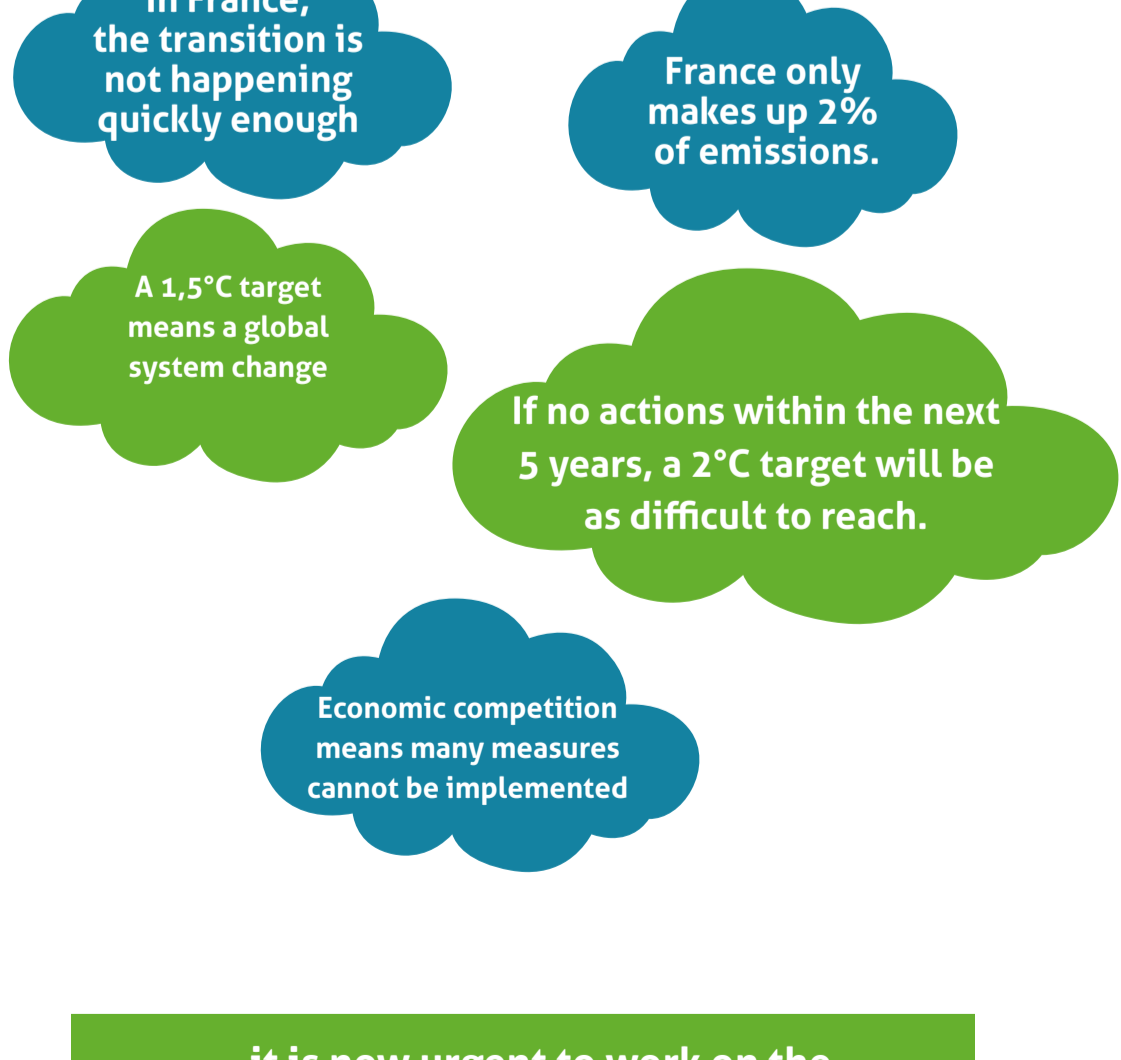
All these changes mean discussing which levers need to be activated



## OPENING UP TO NEW POSSIBILITIES

- Changing economic regulations
- Reviewing town & land planning
- Priority to investments
- New rules of governance
- Cultural changes

In France, the transition is not happening quickly enough France only makes up 2% of emissions.



... it is now urgent to work on the resilience & adaptation of our organisations & lands to cope with climatic shocks to come.



These graphics summarise the original study: «Comment s'aligner sur une trajectoire compatible avec les 1,5°C ? – 2018» published by B&L Evolution consulting firm

Auteurs : Charles Adrien LOUIS, Guillaume MARTIN - B&L évolution  
Design graphic : Edouard Marchal - edwarden.fr / ©freepik